

TOPRAK TAHLİL LABORATUVARI

01.01.2017-31.12.2017 TARİHLERİ ARASINDA LABORATUVARA GELEN NUMUNE DURUMU
01.01.2017-31.12.2017 tarihleri arasında laboratuvara gelen toplam numune sayısı 1385 adettir.

LABORATUVARA GELEN TOPRAK NUMUNESİ İL BAZINDA AŞAĞIDA VERİLMİŞTİR.

İL	NUMUNE SAYISI
EDİRNE	741
TEKİRDAĞ	307
KIRKLARELİ	308
ÇANAKKALE	5
İSTANBUL	4
SAKARYA	2

LABORATUVARA YURT DIŞINDAN GELEN TOPRAK NUMUNELERİ

ÜLKE	NUMUNE SAYISI
ARNAVUTLUK	6
BULGARİSTAN	12

EDİRNE İLİ TOPRAK NUMUNELERİ DAĞILIMI

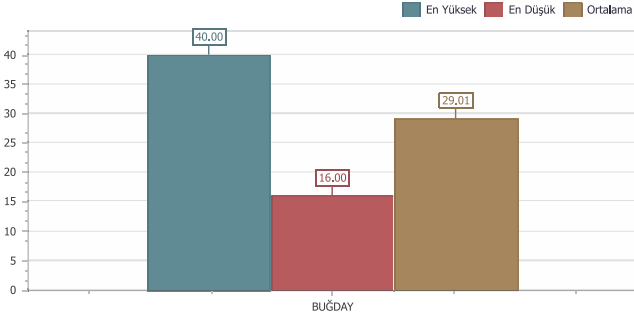
İL	NUMUNE SAYISI
UZUNKÖPRÜ	191
MERİÇ	23
İPSALA	52
KEŞAN	10
HAVSA	298
MERKEZ	121
ENEZ	3
SÜLOĞLU	26
LALAPAŞA	17

ÜRÜN	ADET
AYÇİÇEĞİ	845
BUĞDAY	276
ÇELTİK	90
KANOLA	7
ARPA	1
ARMUT	16
BADEM	7
CEVİZ	52
ÇİM	3
ÇİLEK	1
DOMATES	2
ELMA	16
FASULYE	1
FISTIK	1
KARIŞIK SEBZE	9
KARIŞIK MEYVE	2
KİNOA	1
KARPUZ	3
KAVUN	2
KİRAZ	3
GÜL	4
LAVANTA	4
MISIR	18
NEKTARİN	2
NOHUT	1
SALATALIK	2
ŞEFTALİ	5
TRİTİKALE	1
BAĞ	10

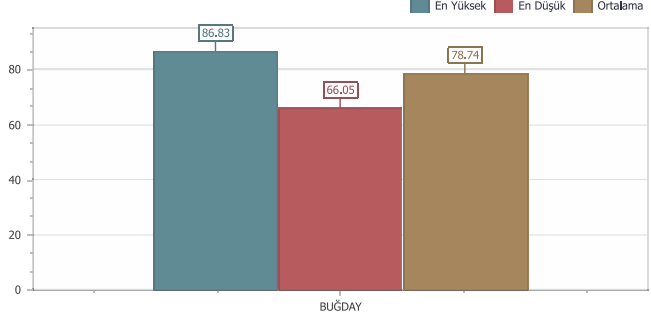
BUĞDAY

ANALİZ SONUÇLARINA GÖRE DEĞERLENDİRME

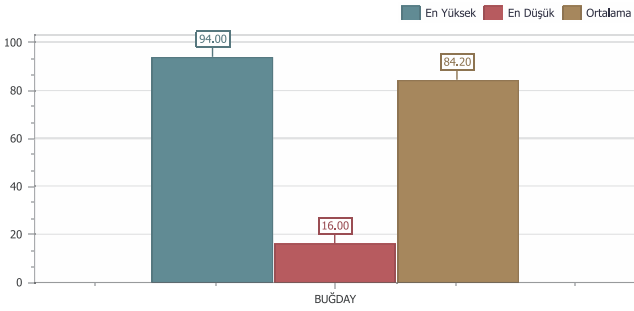
GLUTEN EN YÜKSEK/EN DÜŞÜK/ORTALAMA



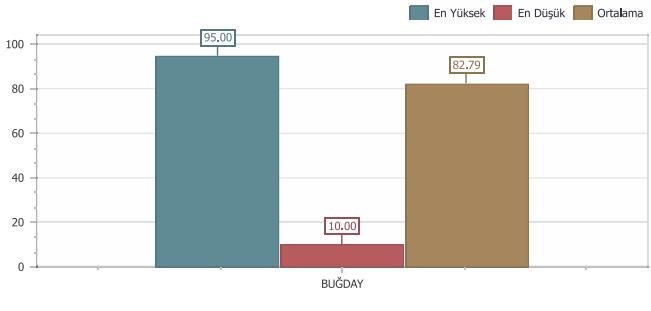
HEKTOLİTRE EN YÜKSEK/EN DÜŞÜK/ORTALAMA



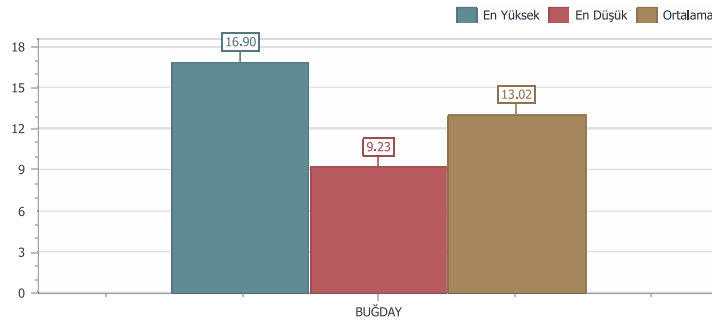
INDEX1 EN YÜKSEK/EN DÜŞÜK/ORTALAMA



INDEX2 EN YÜKSEK/EN DÜŞÜK/ORTALAMA

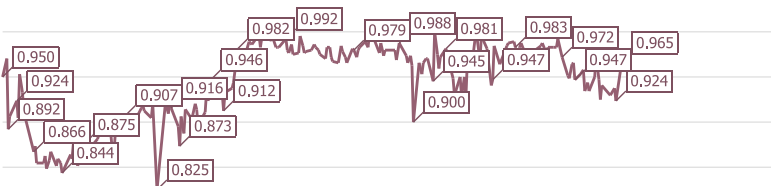


PROTEİN EN YÜKSEK/EN DÜŞÜK/ORTALAMA

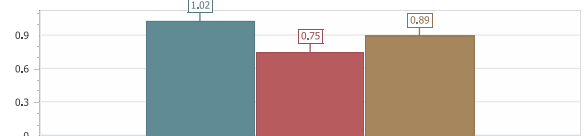


FİYAT İSTATİSTİK

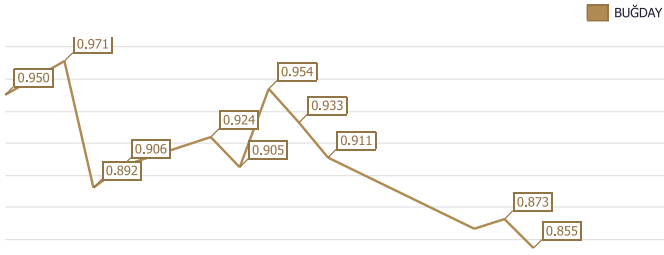
BUĞDAY YILLIK FİYAT ORTALAMASI



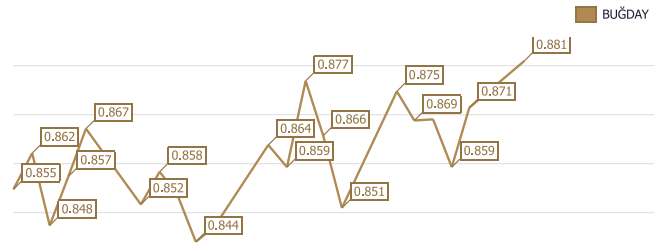
YILLIK FİYAT EN YÜKSEK_EN DÜŞÜK_ORTALAMA



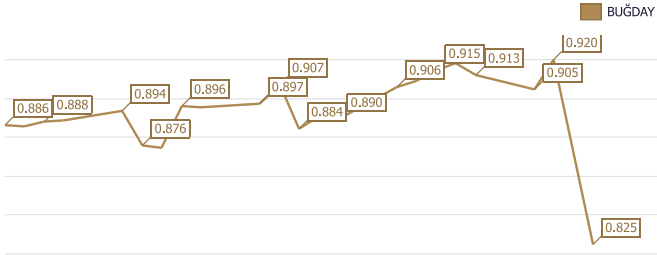
HAZİRAN



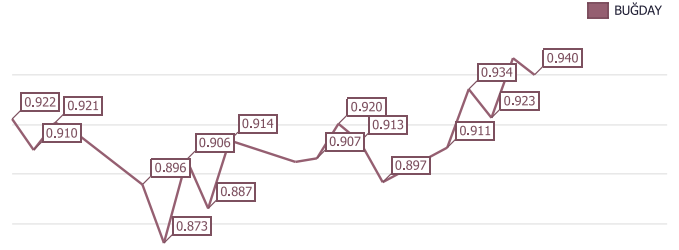
TEMMUZ



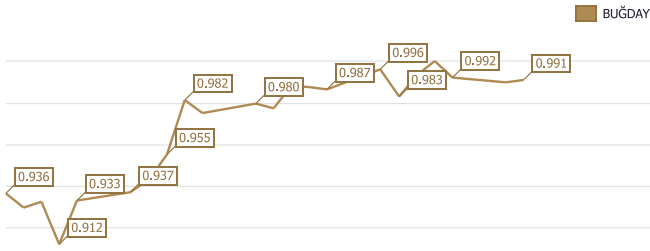
AĞUSTOS



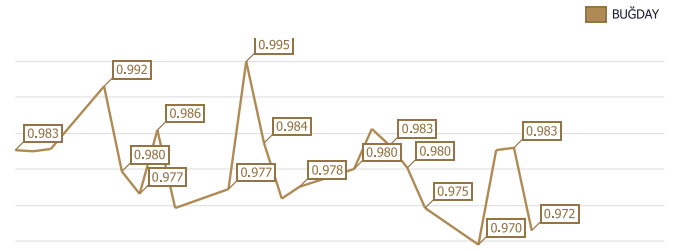
EYLÜL



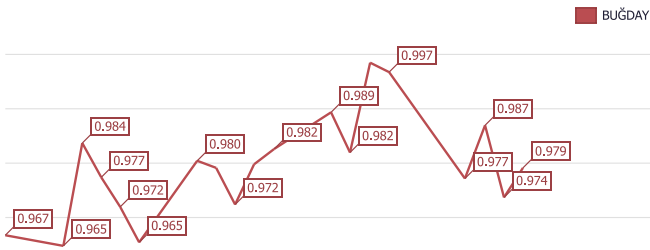
EKİM



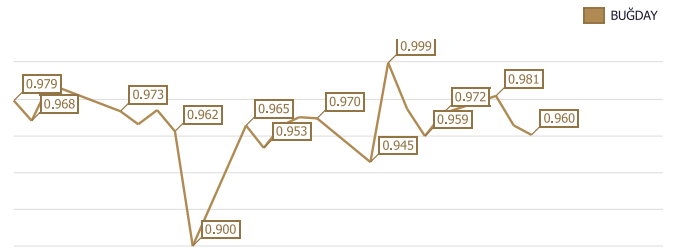
KASIM



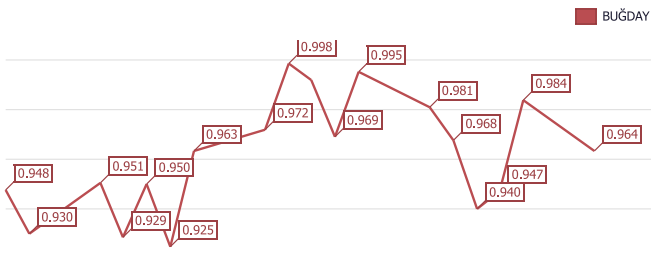
ARALIK



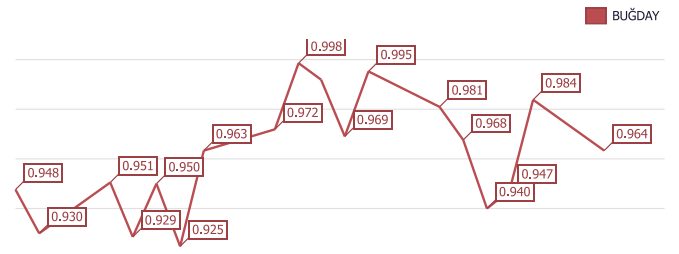
OCAK 2018



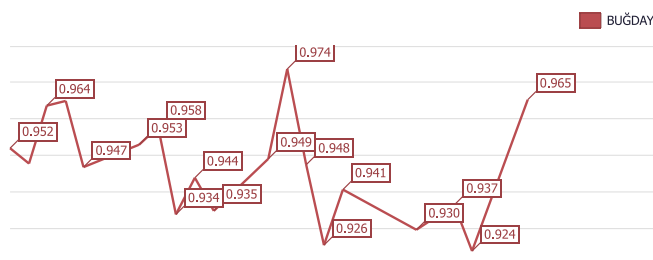
ŞUBAT 2018



MART 2018

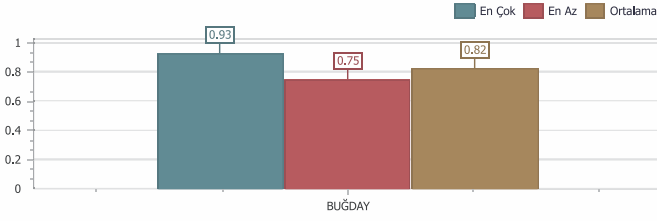


NİSAN 2018

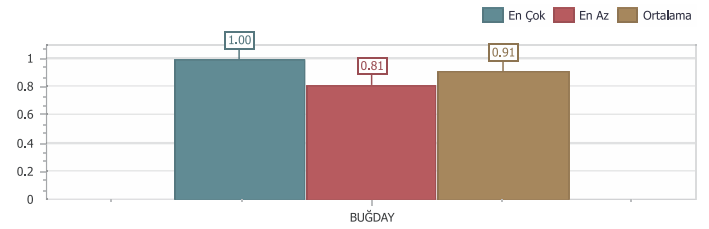


ÇEŞİTLERE GÖRE EN YÜKSEK EN DÜŞÜK ORTALAMA FİYATLAR

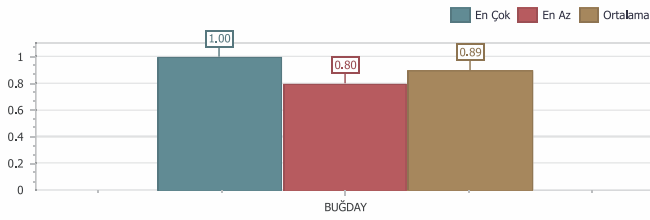
ANDİNO EN YÜKSEK/EN DÜŞÜK/ORTALAMA



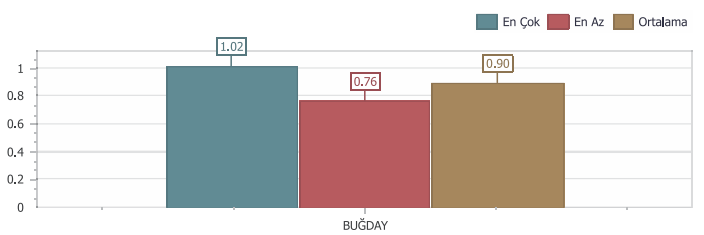
DELEBRANT EN YÜKSEK/EN DÜŞÜK/ORTALAMA



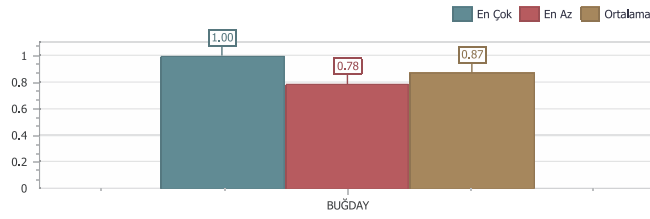
DELEBRANT EN YÜKSEK_EN DÜŞÜK_ORTALAMA



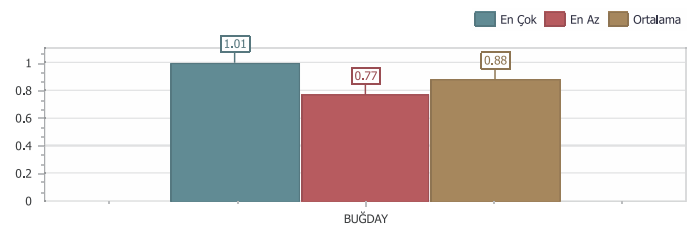
EKSPERİA EN YÜKSEK_EN DÜŞÜK_ORTALAMA



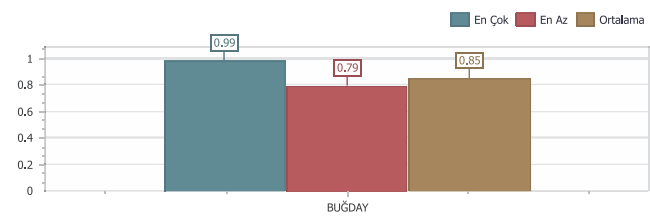
ENOLA EN YÜKSEK_EN DÜŞÜK_ORTALAMA



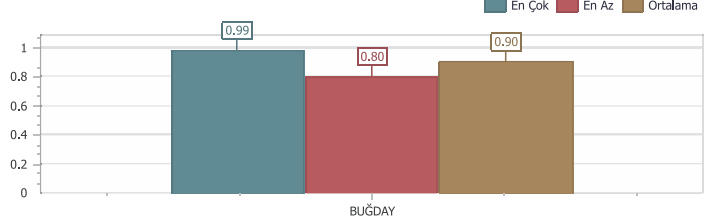
F-85 EN YÜKSEK_EN DÜŞÜK_ORTALAMA



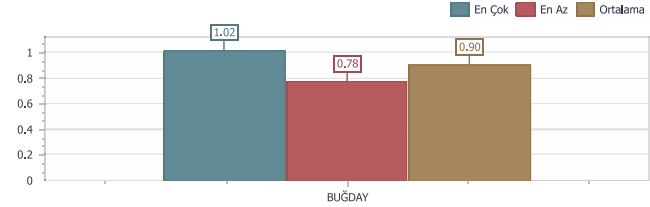
GELİBOLU EN YÜKSEK_EN DÜŞÜK_ORTALAMA



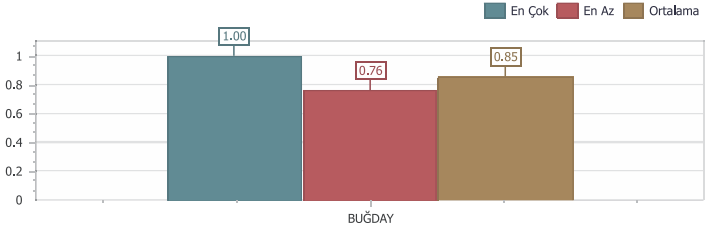
GLOSA EN YÜKSEK_EN DÜŞÜK_ORTALAMA



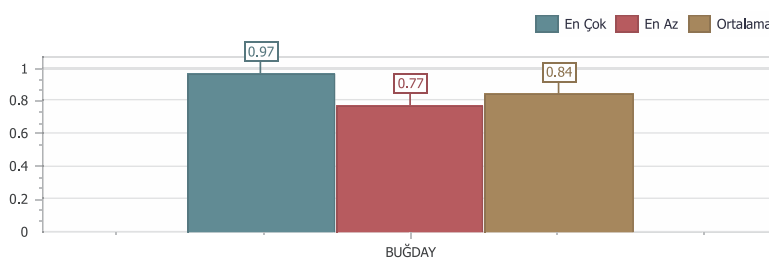
RUMELİ EN YÜKSEK_EN DÜŞÜK_ORTALAMA



TEKİRDAĞ EN YÜKSEK_EN DÜŞÜK_ORTALAMA



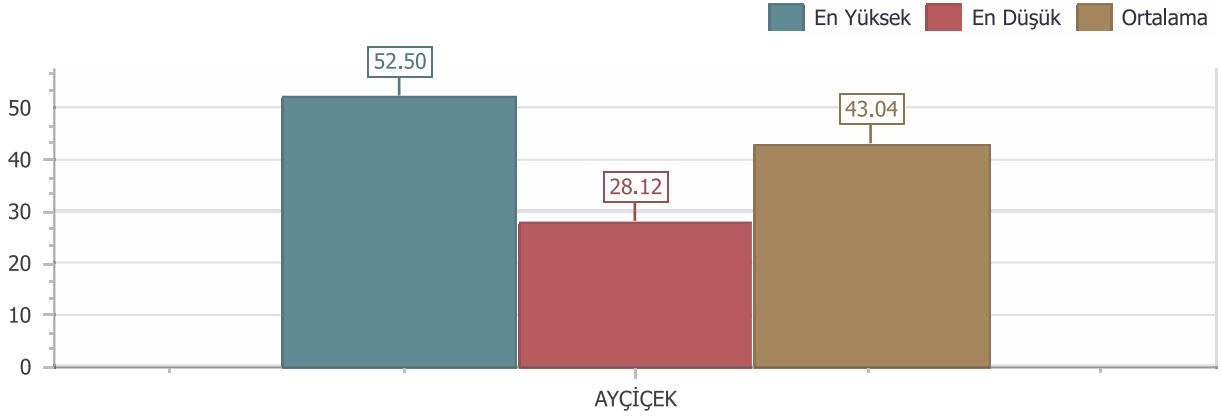
TİNA EN YÜKSEK_EN DÜŞÜK_ORTALAMA



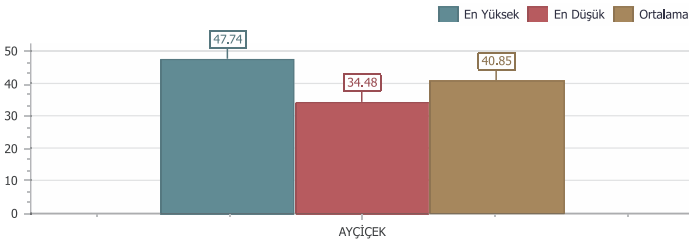
AYÇİÇEK

ANALİZ SONUÇLARINA GÖRE DEĞERLENDİRME

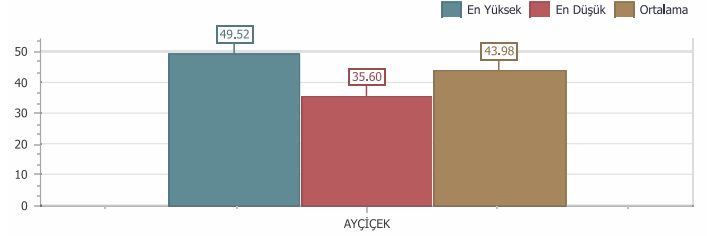
YAĞ ORANI EN YÜKSEK EN DÜŞÜK ORTALAMA (GENEL)



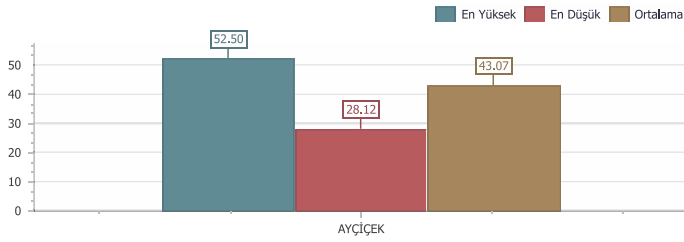
BARBATİ



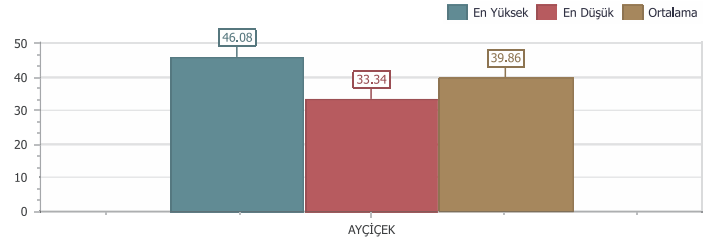
GİBRALTAR



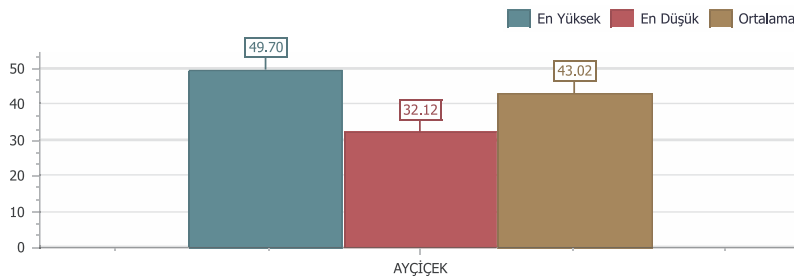
PİONNER



SANAY

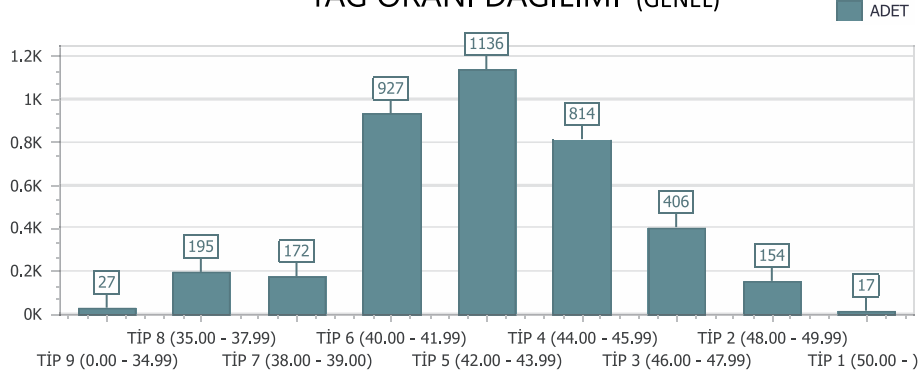


TUNCA

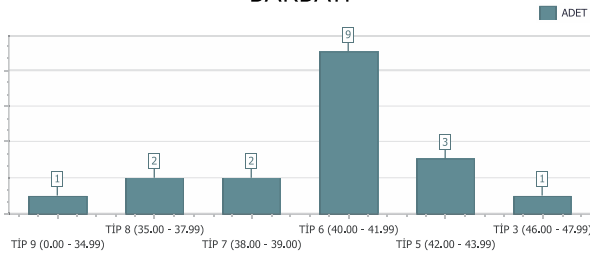


YAĞ ORANI DAĞILIMI

YAĞ ORANI DAĞILIMI (GENEL)



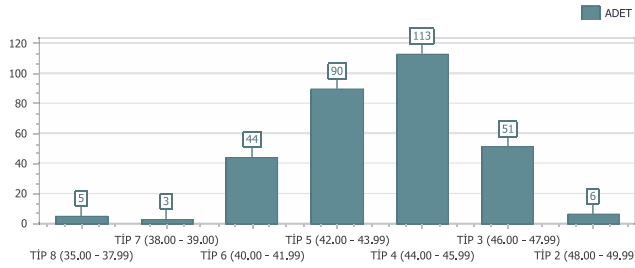
BARBATİ



YILLIK İŞLEM GÖREN ADET_TONAJ

	AYÇİÇEK	
	ADET	TONAJ
Grand Total	18	51,500.00

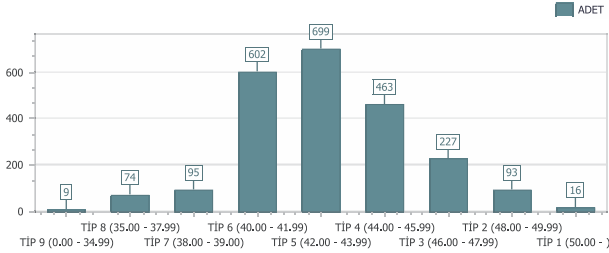
GİBRALTAR



YILLIK İŞLEM GÖREN ADET_TONAJ

	AYÇİÇEK	
	ADET	TONAJ
Grand Total	312	1,416,800.00

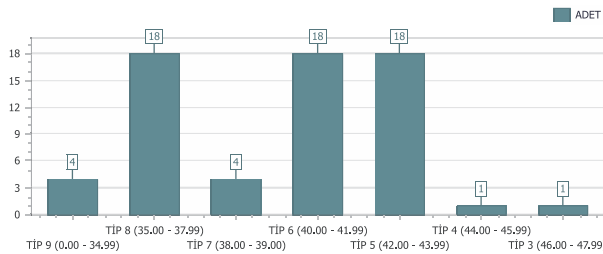
PİONNER



YILLIK İŞLEM GÖREN ADET_TONAJ

	AYÇİÇEK	
	ADET	TONAJ
Grand Total	2279	9,455,500.00

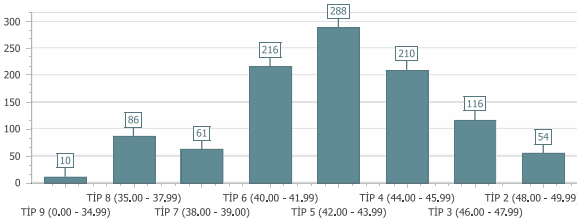
SANAY



YILLIK İŞLEM GÖREN ADET_TONAJ

	AYÇİÇEK	
	ADET	TONAJ
Grand Total	64	203,000.00

SANAY



YILLIK İŞLEM GÖREN ADET_TONAJ

	AYÇİÇEK	
	ADET	TONAJ
Grand Total	1041	4,196,000.00